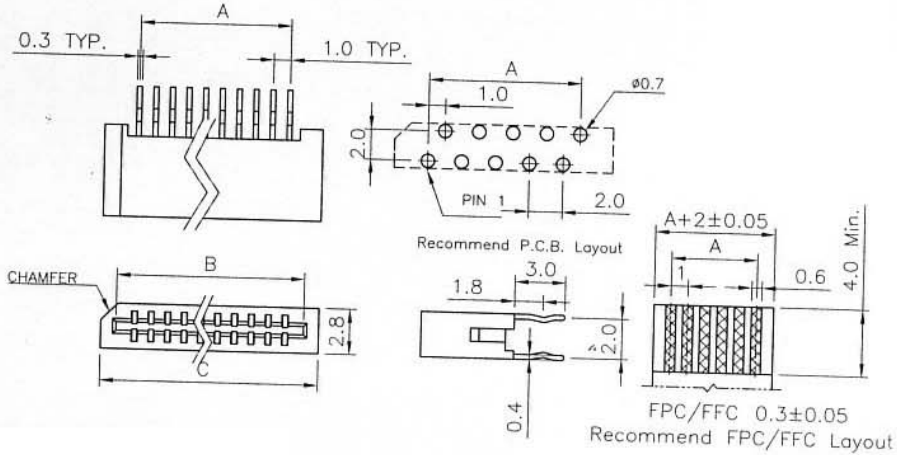


FFC CONNECTOR PITCH=1.0MM NON-ZIF DOUBLE CONTACT

STRAIGHT
FF 8068S



Poles	Dimensions (mm)		
	A	B	C
2	1.00	3.10	5.00
3	2.00	4.10	6.00
4	3.00	5.10	7.00
5	4.00	6.10	8.00
6	5.00	7.10	9.00
7	6.00	8.10	10.00
8	7.00	9.10	11.00
9	8.00	10.10	12.00
10	9.00	11.10	13.00
11	10.00	12.10	14.00
12	11.00	13.10	15.00
13	12.00	14.10	16.00
14	13.00	15.10	17.00
15	14.00	16.10	18.00
16	15.00	17.10	19.00
17	16.00	18.10	20.00
18	17.00	19.10	21.00
19	18.00	20.10	22.00
20	19.00	21.10	23.00
21	20.00	22.10	24.00
22	21.00	23.10	25.00
23	22.00	24.10	26.00
24	23.00	25.10	27.00
25	24.00	26.10	28.00
26	25.00	27.10	29.00
27	26.00	28.10	30.00
28	27.00	29.10	31.00
29	28.00	30.10	32.00
30	29.00	31.10	33.00

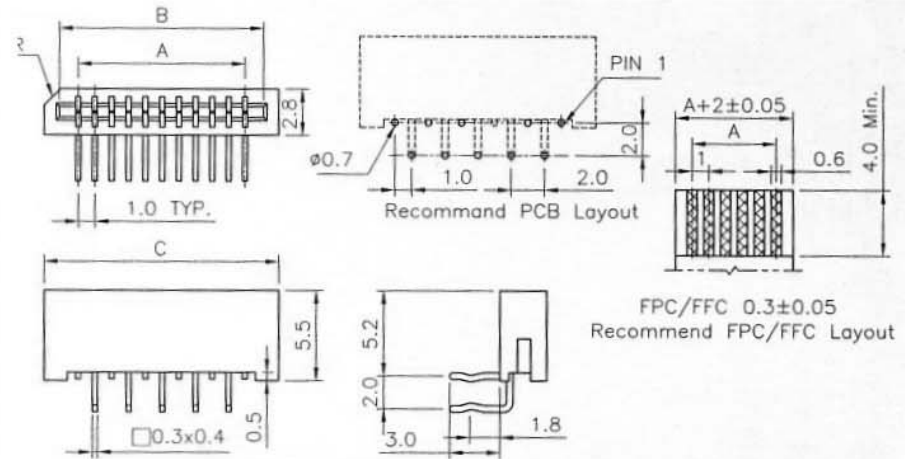
SPECIFICATIONS

VOLTAGE RATING: 125V AC/DC
 CURRENT RATING: 1A AC/DC
 WITHSTANDING VOLTAGE: 500V AC/MINUTE
 INSULATION RESISTANCE: 100M OHM MIN
 TEMPERATURE RANGE: -20C TO 85C
 CONTACT RESISTANCE: 20m OHM max

MATERIAL

CONTACT: PHOSPHOR BRONZE, TIN PLATED
 BASE: PPS UL94V-0

RIGHT ANGLE
FF 8068R



DRAWN BY	DESIGNED BY	UNIT	SCALE	TOLERANCE
		mm		+/- 0.2MM
CHECKED BY	APPROVED BY	DATE	VER NO.	
		25 MAR 04		
OWL ELECTRONICS LIMITED				PART NO.
				FF 8068S FF 8068R