

USB A TYPE FEMALE (DOUBLE DECK) RIGHT ANGLE 8 PIN

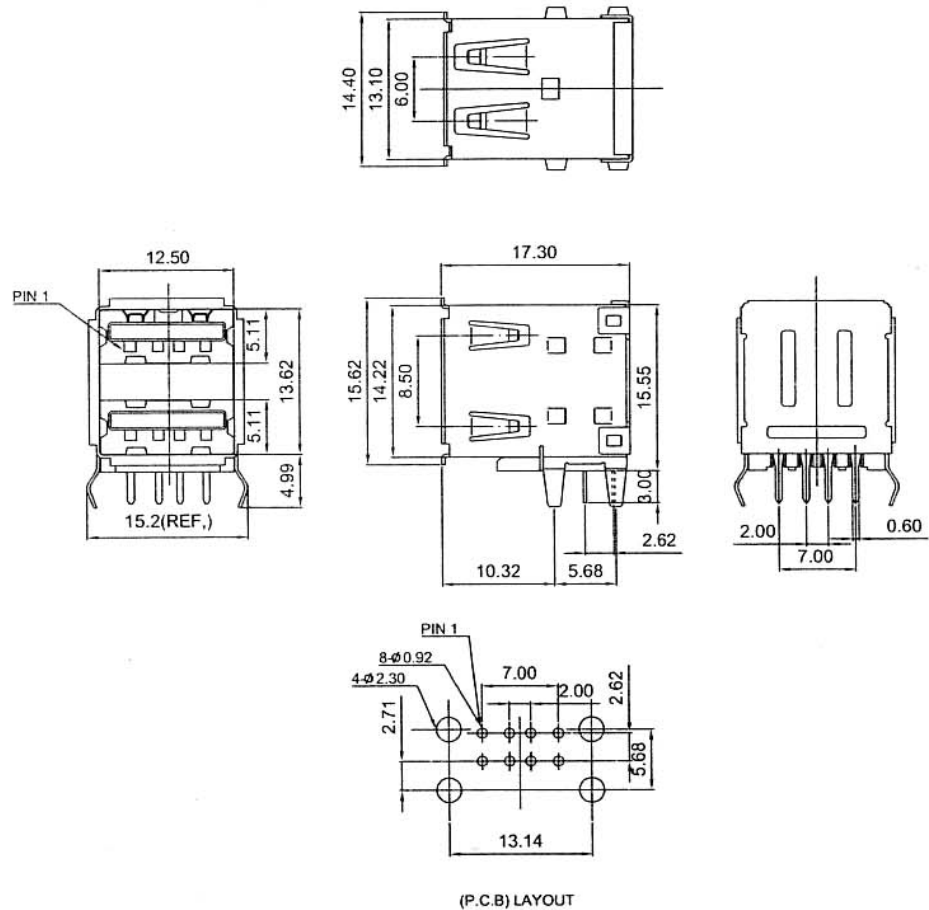
SPECIFICATIONS:

CURRENT RATING 1A AC/DC
 WITHDRAWING VOLTAGE 500V AC/MINUTE
 INSULATION RESISTANCE 5000M OHM MIN
 TEMPERATURE RANGE -40C TO +105C
 CONTACT RESISTANCE 20m OHM MAX

MATERIAL

SHELL - BRASS, NICKEL OR TIN PLATED
 HOUSING - NYLON 6T UL94V-0
 TERMINAL - PHOSPHOR BRONZE
 SPRING CLIP - BRASS, TIN PLATED

PACKING
 1000PCS/BAG



DRAWN BY	DESIGNED BY	UNIT	SCALE	TOLERANCE
		mm		±0.25
CHECKED BY	APPROVED BY	DATE	VER. NO.	
		06-20-01	A	
OWL ELECTRONICS LIMITED				PART NO.
				ST 3004(2)-00