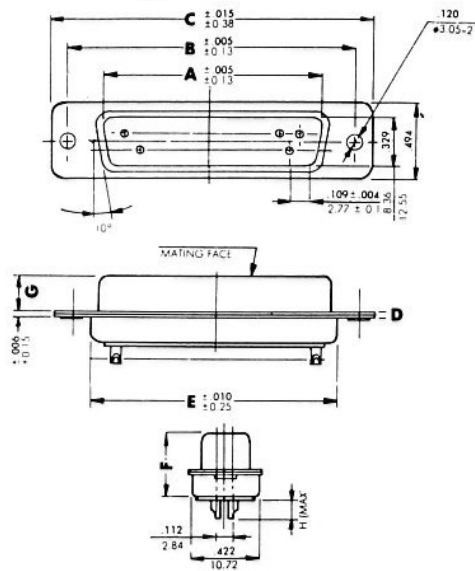
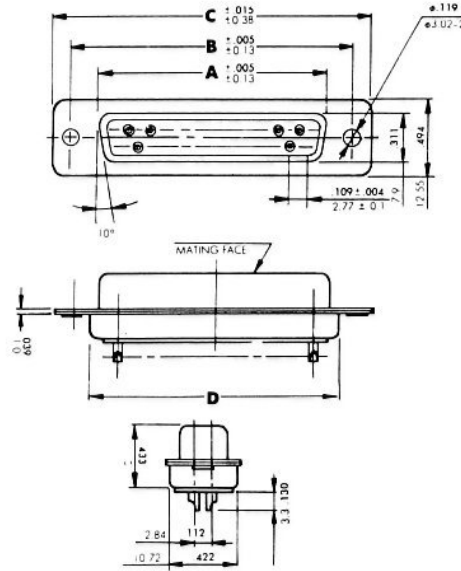


DIMENSION : $\frac{\text{inch}}{\text{mm}}$



MALE



FEMALE

MATERIAL

Insulator: PBT+30% Glass Fiber (UL94V-0)
 Contact: Brass
 Contact Plated: Gold Over Nickel
 Shell: Steel
 Zinc Plated or Tin Plated

SPECIFICATION

Current Rate: 5 A
 Insulator Resistance: 1000 MΩ
 Contact Resistance: 20MΩ Max
 Voltage: 500V AC for one minute
 Temperature: -40°C — +105°C

DIMENSION	A	B	C	D	E	F	G	H
DB 1199M-9	.666 16.92	.984 24.99	1.213 30.81	.0039 1.0	.759 19.28	.433 11.0	.235 5.97	.130 3.3
DB 1199M-15	.994 25.25	1.312 33.32	1.541 39.14	.039 1.0	1.083 27.51	.433 11.0	.235 5.97	.130 3.3
DB 1199M-25	1.534 38.96	1.852 47.04	2.088 53.04	.039 1.0	1.625 41.3	.433 11.0	.230 5.84	.130 3.3

DIMENSION	A	B	C	D
DB 1199F-9	.643 16.33	.984 24.99	1.213 30.81	.759 19.28
DB 1199F-15	.971 24.66	1.312 33.32	1.541 39.14	1.003 27.51
DB 1199F-25	1.511 38.38	1.852 47.04	2.088 53.04	1.625 41.3

D-SUB SOLDER TYPE

DRAWN BY	DESIGNED BY	UNIT	SCALE	TOLERANCE
		mm		±0.25
CHECKED BY	APPROVED BY	DATE	VER. NO.	
		06-20-01	A	
OWL ELECTRONICS LIMITED				PART NO.
				DB 1199