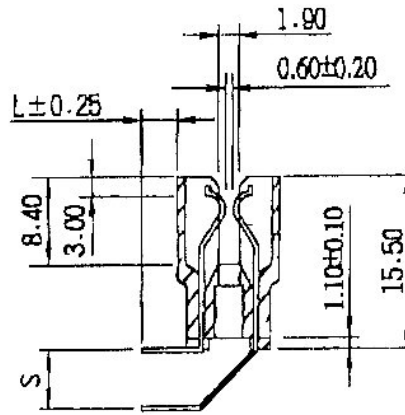
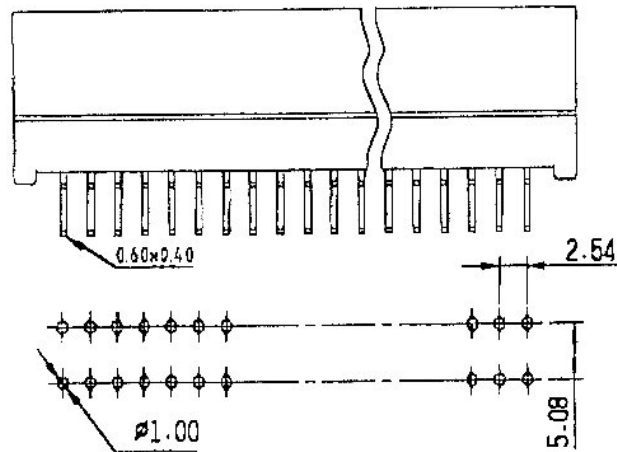
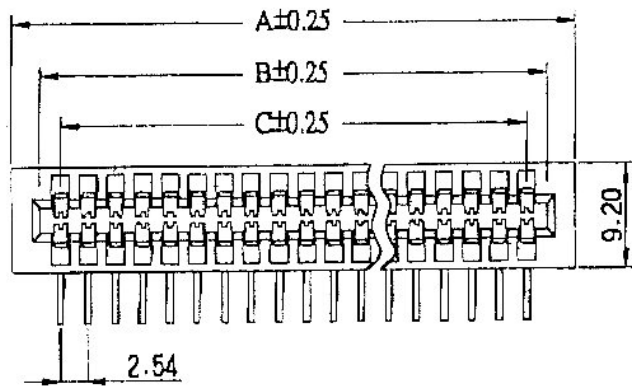


# EDGE CONNECTOR PITCH=2.54MM RIGHT ANGLE



## FEATURE:

INSULATOR

Glass-filled P.B.T. 1s 94V-0 rated

CONTACT

Phosphor Bronze selective gold plating over nickel

## SPECIFICATION:

Current Rating: 3 amperes

Contact Resistance: 20 milliohms max.

Operation Temperature: -55° c to 105° c

Voltage Rating: 800 VAC 1 minute

Insulation Resistance: 5000 megohms min

Insertion Force: 412 grams max. per pair

Withdrawal Force: 32 grams min. per pair

CONTACTS NO	DIM A	DIM B	DIM C
3/6	14.22	10.36	5.08
4/8	16.76	12.90	7.62
5/10	19.30	15.44	10.16
6/12	21.84	17.99	12.70
7/14	24.38	20.52	15.24
8/16	26.92	23.06	17.78
10/20	32.00	26.14	22.86
12/24	37.08	33.22	27.94
13/26	39.62	35.76	30.48
14/28	42.16	38.30	33.02
15/30	44.70	40.84	35.56
16/32	47.24	43.36	38.10
17/34	49.78	45.92	40.64
18/36	52.32	48.46	43.18
19/38	54.86	51.00	45.72

DRAWN BY	DESIGNED BY	UNIT	SCALE	TOLERANCE
		mm		±0.25
CHECKED BY	APPROVED BY	DATE	VER. NO.	
		05 MAY 1999	A	
OWL ELECTRONICS LIMITED				PART NO.
				EC 3400R-