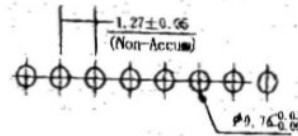
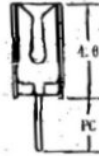
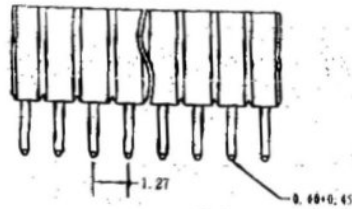
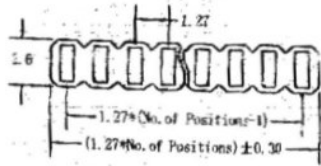


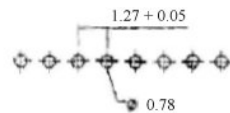
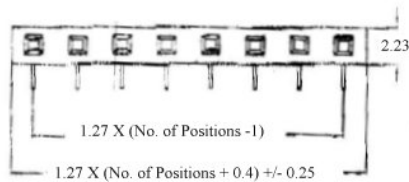
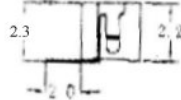
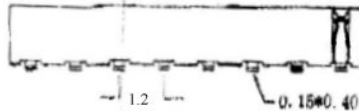
PCB SOCKET P=1.27MM SINGLE ROW

**PS 1600R
SINGLE ROW
STRAIGHT**



Recommended P.C.B. Layout

**PS 1600R
SINGLE ROW
RIGHT ANGLE**



Recommended P.C.B. Layout

SPECIFICATIONS

VOLTAGE RATING: 250V AC/DC
CURRENT RATING: 3A AC/DC
WITHSTANDING VOLTAGE: 1000V AC/MINUTES
INSULATION RESISTANCE: 1000M OHM MIN
TEMPERATURE RANGE: -25C TO + 85C
CONTACT RESISTANCE: 20m OHM MAX

MATERIAL

CONTACT: BRASS, GOLD PLATED
BASE: PBT UL94V-0

DRAWN BY	DESIGNED BY	UNIT	SCALE	TOLERANCE
		mm		+/- 0.2MM
CHECKED BY	APPROVED BY	DATE	VER. NO.	
		25 MAR 04		
OWL ELECTRONICS LIMITED				PART NO.
				PS 1600S- PS 1600R-